

*Sowing the Seeds of Hope*



**country hope**

**Annual Report 2018**



## Contents

Message from the Chairman.....	3
Message from the General Manager.....	4
Mission, Vision and Objectives.....	5
The Journey.....	6
Illnesses.....	7
“Time out for life” Holiday Camp.....	8
Family Liaison Reports.....	9
Family photos.....	11
Fundraising.....	12
Partners/Sponsors.....	13
Board of Directors/Staff/Volunteers.....	14
Financial Reports.....	15

# Message from the Chairman

It is with great pleasure I present my chairman's report for the year 2018.

It is with much regret that we received John Studdert's resignation letter this year. John has been a big part of Country Hope for over thirteen years, serving as chairman in that time for 10 years. He has been instrumental in the success and growth of our great organisation and will be sadly missed on the board and Country Hope itself. We all sincerely thank you and will miss your enthusiasm and direction.

Di Somerville is another board member who has left us this year and will be sadly missed. We wish Di well with her future endeavours and thank her for her professional input and ideas.

We welcome our newest board member, Jen Spain who has already shown that she will be a big part of our organisation with her wisdom and professionalism, especially relating to our governance requirements.

Financially it has been another very successful year and I attribute this to the fact that Country Hope is getting better known and recognised throughout the region we serve and that we are a local charity doing amazing charity work in our local area.

Our lack of directors in the Griffith and Albury regions are of personal concern to me. Bev (Griffith) and Nikki (Albury) are both doing a fantastic job and are going above and beyond; however, we need to recruit directors from these areas who are enthusiastic and well-known people. I am confident that when we do fill these positions with the right people, these areas will expand and grow even further at a rapid rate. These areas deserve to have Country Hope helping and representing them, providing support to families with children who have cancer and other chronic, life-threatening illness.

Camp this year was again held at Borambola Sport & Recreation Centre and was another outstanding success. I would like to thank the camp committee for all their hard work, dedication and commitment. Throughout the year the camp committee dedicate their time to planning and organising the camp and then work together to ensure the five-night camp runs like clockwork. On behalf of the board and all the staff at Country Hope, we would like to thank the camp committee, led by Randall and Ged, plus all the doctors, nurses, volunteers, carers and anyone else that may have helped in any way to make our camp another outstanding success.

A huge thank you to all the Country Hope staff – we are privileged to have such a wonderful team including Ellie, Kim, Tom, Nikki and Bev. We welcome our newest staff member Stina who is the new Family Liaison Officer assisting Ellie and we hope that Stina enjoys her time here at Country Hope. Our thanks to Nikky also, who volunteers on a Tuesday in the office and is a wonderful support to the team. I want to assure each of you, your loyalty and hard-work does not go unnoticed.

Finally, I would like to thank all directors for their support, input and dedication for the past year, to this great organisation we all believe in and love.

Yours sincerely

**Kerry Flinn**  
**Chairman 2018**

# Message from the General Manager

Childhood illness cheats. It cheats families of a life they knew. It cheats families of their time, their money, their energy and their *hope*. Childhood illnesses can also cheat couples of their relationship. Country Hope works very hard to give back *Hope* to the families.

We find that if we can help families financially and emotionally, we help keep families together.

2018 has proven to be yet another busy time for Country Hope. We have registered fifteen new families so far this year from many parts of our region. Sadly, three little ones have passed away.

We average seventeen new families each year. So far, we have had nearly 200 children who have been diagnosed with cancer or a chronic life-threatening illness registered with Country Hope. Country Hope helps the entire family and gives relief...when it matters most.

Because of the generosity of the people in our communities, Country Hope can help families in many ways; travel and accommodation, medical costs, mortgages, rent, utility bills, food and vehicle costs to name a few.

We have wonderful staff, a board of seven directors and volunteers. Three Family Liaison Officers, Stina in Wagga, Nikki in Albury and Bev in Griffith, Kim our Administration Officer and Tom our Fundraising and Events Manager in Wagga, who all work tirelessly to deliver our support and services to our families and help to keep Country Hope running smoothly.

**Ellie Webb**  
**General Manager**

“““

*We find that if we can help families financially and emotionally, we help keep families together.*





country hope

## OUR VISION

Relief – when it matters most!

## OUR MISSION

To provide comprehensive family centred support programs for country children diagnosed with cancer and chronic life-threatening illnesses

## OUR OBJECTIVES

We are dedicated to developing support programs and services, in response to the needs of families as and when they arise

We recognise that childhood cancer and chronic life-threatening illnesses have a tremendous impact on an entire family

We ensure the money raised in the country stays in the country to support country children and their families

# The Journey

With the realisation of the significant effects of childhood cancer, such as a child's ability to cope emotionally and mentally with their illness and their chances of survival, an annual children's camp was established. The idea of the camp was to provide the diagnosed children and their siblings with something to look forward to, and to look back on, when going through often invasive and drawn out treatments. Very quickly the benefits of this special time away became evident. Seeing the smiles on the children's faces and the excitement shared in anticipation of meeting again with their new-found friends and carers at the next camp contributed to extraordinarily positive impact the camp had on the lives of the children. The camp also gives the parents much needed respite.

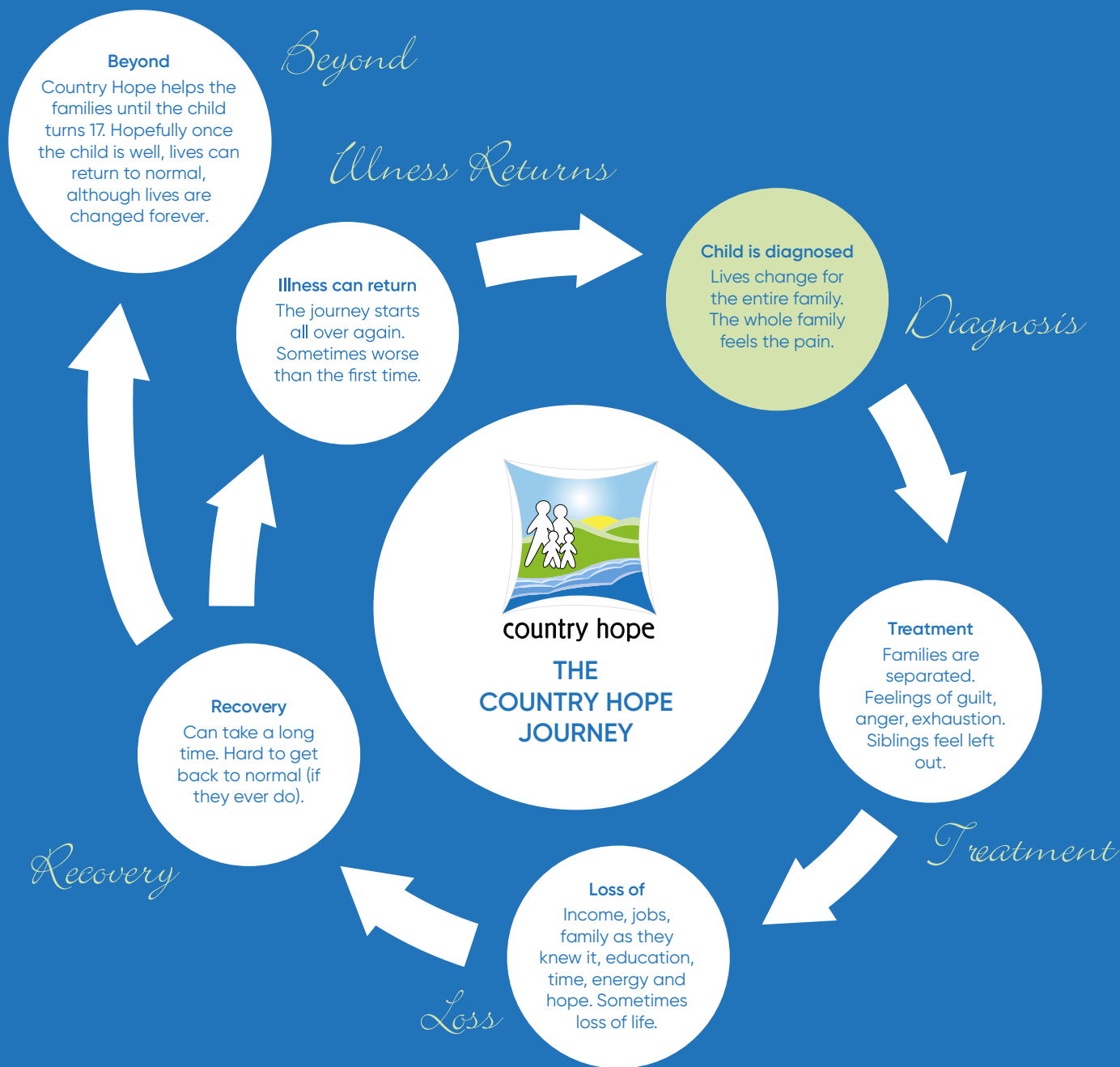
Although the camps undoubtedly achieved great success in increasing a child's ability to cope with and recover from their illness, it was quickly identified that an annual camp was simply not enough. It came to be obvious that country families had so many more pressures and additional needs when dealing with such life altering events compared to families residing nearer to the major paediatric hospitals.

In 2003 because of a great lack of available practical and financial assistance, with a generous initial contribution made by Mr Brian and Mrs Joy Kahlefeldt of \$20,000, Country Hope was formed.

Country Hope's aim was to adequately address the very critical and specific needs to our own local children who had been diagnosed with cancer or a chronic life-threatening illness and their families, how and when they need it most. Country Hope began with supporting thirty families. Today we assist over 180 families in the Riverina, Murray regions, with support centres in Wagga Wagga, Albury and Griffith.

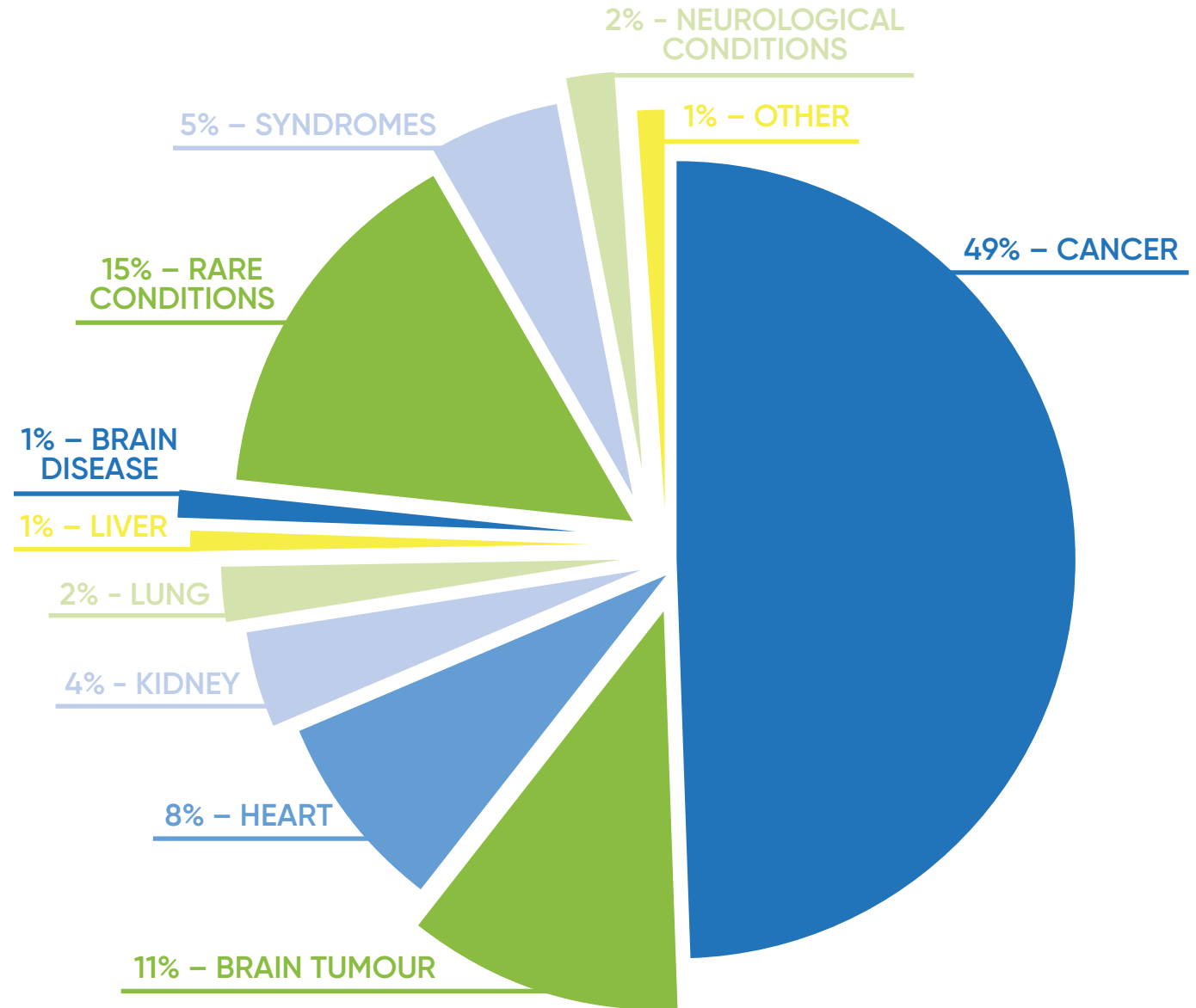
Country Hope was incorporated in 2003, forming a board of management which included Alan Lean as Chairman, Rod Dunlop, Peter Walsh, Steve Dwyer, Babs Donaldson, Yvonne Braid and Ged Madden, who were the founding members. Country Hope Inc. was changed in 2006 to Country Hope Limited (by guarantee). This then required a directorship and a Board of Directors was elected, John Studdert was elected Chairmen/CEO.

It was in 2006 that Country Hope extending its criteria not only for children with cancer but to children with chronic life-threatening illness, helping families who have rare diagnoses that fall through the gaps.



# Illnesses

Categories of life threatening illness presented over Country Hope's 15 year history.

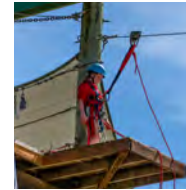


# "Time Out For Life" Holiday Camp

The "Time out for life" holiday camp is a fully supervised camp for the children and their siblings.

The Camp aims to allow the children to get back in touch with being kids again. The fun and entertainment provided at Camp, enables children to take time out from the reality of their treatment, hospitalisation and everyday stressors associated with illness. Letting kids be kids has very positive effects on their recovery.

Each child has a trained volunteer adult carer with them always. A medical team of doctors and nurses and other volunteers also attend camp to make it the most wonderful time for the children.





## WAGGA

I have had the pleasure of working for Country Hope since the start of this new financial year. My position has been for 2-part days a week until the end of the year 2018 when my Miss Wagga Wagga Quest commitments are lower.

During these short few months, I have started to get to know some of the families, visited Sydney Children's Hospital, successfully organised Red25 (Blood bank blood drive), and organised family stories for our website including writing stories. I also had the absolute pleasure of attending the Camp and assisting in preparing beforehand, which was a thoroughly enjoyable.

With a tertiary education in both Psychology and Social Work, it is my hope to be able to manoeuvre the role of Family Liaison Officer more closely into the realm of clinical work and counselling support for our families. I hope to provide support around grief and loss for our clients as well as trauma support for children facing long term medical challenges (in the distant future).

Networking with local community agencies is also a vital component of the work I aim to do, not only for getting the Country Hope name out and understood in our community, thereby gaining further referrals, but also in order to allow other initiatives to support our families in the best way they can, so that we can help in ways the families do not have ordinary means for support.

I look forward to continuing to work closely with our families and their children to support them through this tough journey of hope.

**Stina Constantine**  
**Family Liaison Officer – Wagga**

## GRIFFITH

The Griffith Office has been busy looking after our family's needs in many ways. In the last year we have lost three little ones and cared for their families, siblings and friends as they go through the journey of losing a loved and treasured child. We continue to phone or to pop in for a chat, a cuppa, memories and just to show our care for them.

Currently in the Griffith area, we have two new children and their families to support along their journey through the diagnoses, treatment and hospital time.

As we offer them help in the practical ways with the day to day demands of their lives with home, school and work it eases the strain on the family's emotionally and financially.

The "Time out for Life" holiday camp is always a highlight for me and this year was no exception.

Fundraising in Griffith has been ongoing with a Country Music Festival, Mother's Day raffle, Annual Big raffle, Easter raffle and the upcoming Christmas raffle with the Griffith businesses donating many prizes and the community supporting us by buying the tickets which, brings much needed funds in so we can continue our wonderful work.

To the volunteers who help by selling raffle tickets, making food and giving their time and friendship to make it happen a very big Thank You. I couldn't do it without you all with me.

To all the Country Hope Families out there keep smiling and best wishes to you all.

**Bev Devery**  
**Family Liaison Officer - Griffith**

## ALBURY

2018 for the Albury Office has been an enormous year with many highs and lows along the way. One of the highlights for the year was most certainly the Country Hope sibling support program. The children gained so much from the day. We hope to be able to offer similar programs in 2019.

The Country Hope Convoy for Kids 2018 Event was held on Sunday the 31st October raising almost \$40,000 and gained some great media attention leading up to the event. It was a mammoth effort and the team did a brilliant job at bringing the day together. With a new fundraising team forming we look forward to continuing to get the Country Hope message out into the community even more.

By far the greatest privilege has been being able to help our Country Hope children and their families who benefit so greatly from the support we provide. Having been on the receiving side some years ago now, I know all too well that Country Hope does so much behind the scenes and it is an honour to be part of such a wonderful organisation.

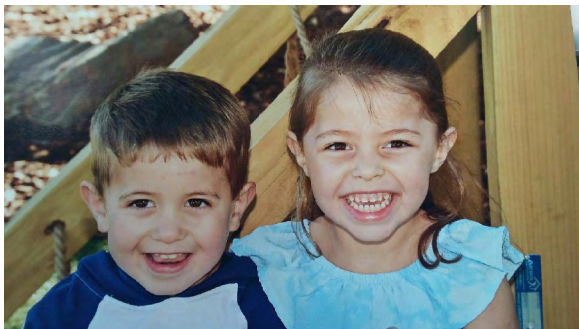
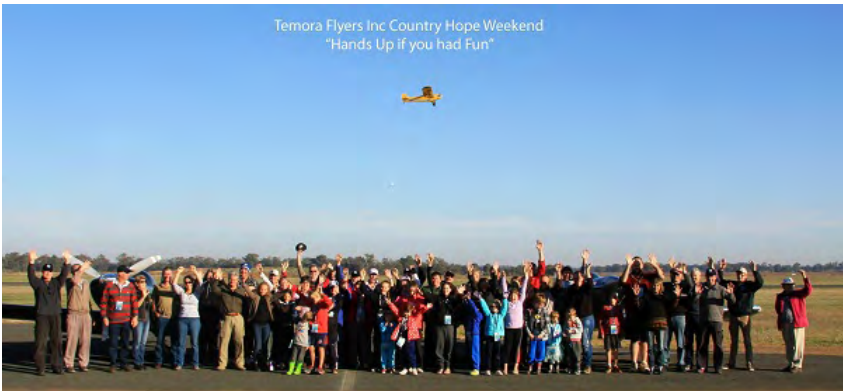
A huge thank you to the many people who supported and helped us throughout the year. A special thank you to Julie in the office for her great work, our dedicated team of volunteers who continue to help with fundraising and spreading the word about Country Hope and the value we bring to our community.

Best wishes to all!

**Nikki Grae**  
**Family Liaison Officer – Albury**



# Photos



# Fundraising

The year of 2018 started with a bang – literally!

The largest fireworks display you have ever seen in Wagga Wagga went off on New Year's Eve at Lake Albert. Thomas Brothers Group again excelled themselves in supporting the local community and raised significant money for Country Hope.

The Riverina Redneck Car Rally in March was sensational and contributed greatly to our fundraising goals for the year.

The annual South Wagga Rotary Golf Day in March was another successful event thanks to the members of that wonderful local organisation.

The Charles Sturt University "O" Week this year was for us as well and the students did an enormous amount of work to ensure a very successful outcome.

Evolution Mining at West Wyalong was once again a major contributor to our families and we thank all the management and employees for their efforts.

We had a fantastic entrant in the Thomas Brothers Wagga Takes Two concert this year and excellent funds were raised.

The annual Thomas Brothers Night of Knights Ball and the Wagga Picnic Races generated great financial rewards for us with the Picnic Race Club supporting our annual Time Out for Life Holiday Camp.

Our entrant in the Miss Wagga Quest has been working very hard for us and we appreciate the efforts of all the girls involved.

We were supported by everyone throughout the area who held all sorts of fundraising projects for us and are too numerous to mention individually – so please accept our sincere thanks for all you have done for us.

Our volunteers have been remarkable throughout 2018 and we couldn't exist without you!

It all starts again on New Year's Eve at Lake Albert with another big bang!

**Tom Looney**  
Fundraising & Events manager



“““

*The year of 2018 started with a bang – literally!*



# Partners & Sponsors

Country Hope is proudly supported by many wonderful businesses and people of the Riverina. We would like to acknowledge the following businesses for their support which has generously contributed to the Country Hope Trust in many different ways.



## Board of Directors

Kerry Flinn – Chairman

Pat Barrett – Deputy Chair / Secretary

Sally Whitley – Treasurer

Yvonne Braid – Director

Kerry Pascoe – Director

Ged Madden – Director

Jen Spain – Director

## Staff

Ellie Webb – General Manager

Kim Taylor – Administration Officer

Tom Looney – Fundraising & Events Manager

Stina Constantine – Family Liaison Officer, Wagga

Nikki Grae – Family Liaison Officer, Albury

Bev Devery – Family Liaison Officer, Griffith

## Volunteers

Too many to mention!!

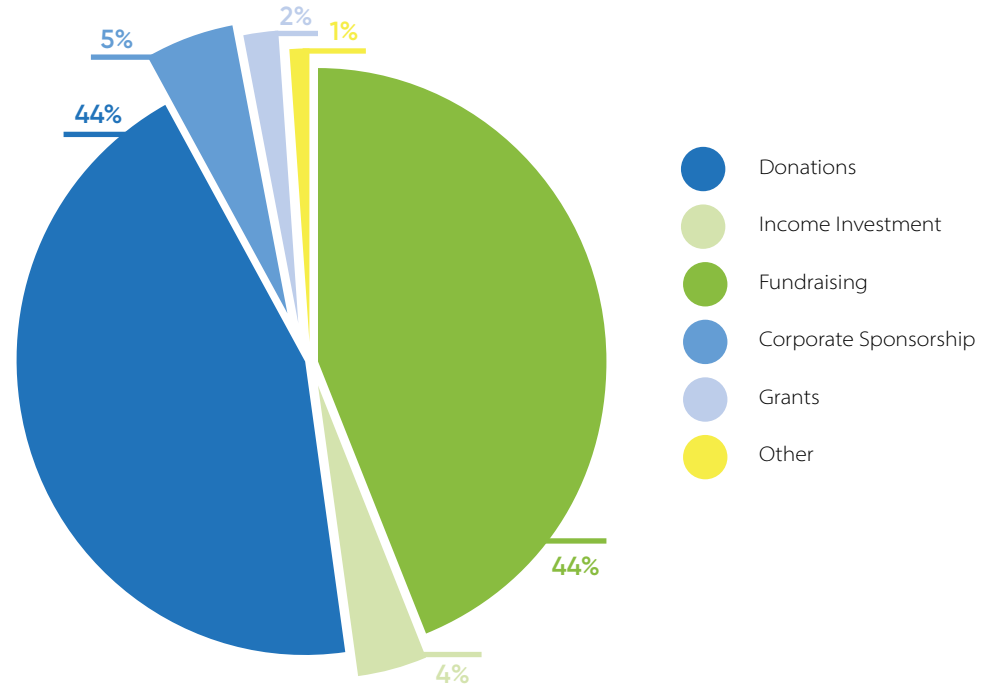
Thank you to all of our volunteers.



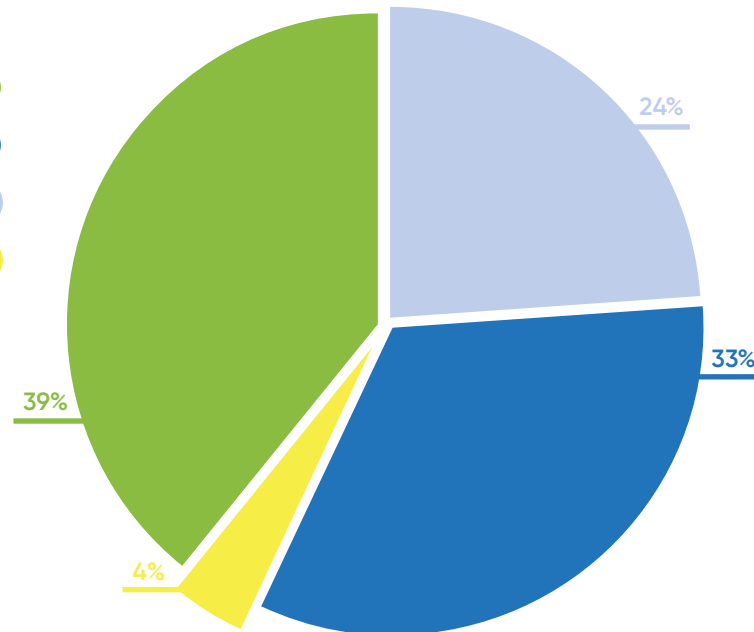
# Financial Reports

## INCOME

Source	2017-2018
Donations	\$384,281.96
Income Investment	\$32,574.64
Fundraising	\$378,550.25
Corporate Sponsorship	\$40,467.25
Grants	\$20,500.00
Other	\$11,018.82



- Administrative/running costs ●
- Family Support Services ●
- Total Occupancy Costs ●
- Wages & Employment Expenses ●



## EXPENSES

Source	2017-2018
Administrative/running costs	\$145,729.36
Family Support Services	\$204,925.57
Total Occupancy Costs	\$24,125.96
Wages and Employment Expenses	\$241,264.82



**country hope**

Country Hope Trust

ABN 93 187 189 789

25 Blake Street Wagga Wagga NSW 2650

02 6971 8955

1800 007 880

[www.countryhope.com.au](http://www.countryhope.com.au)